



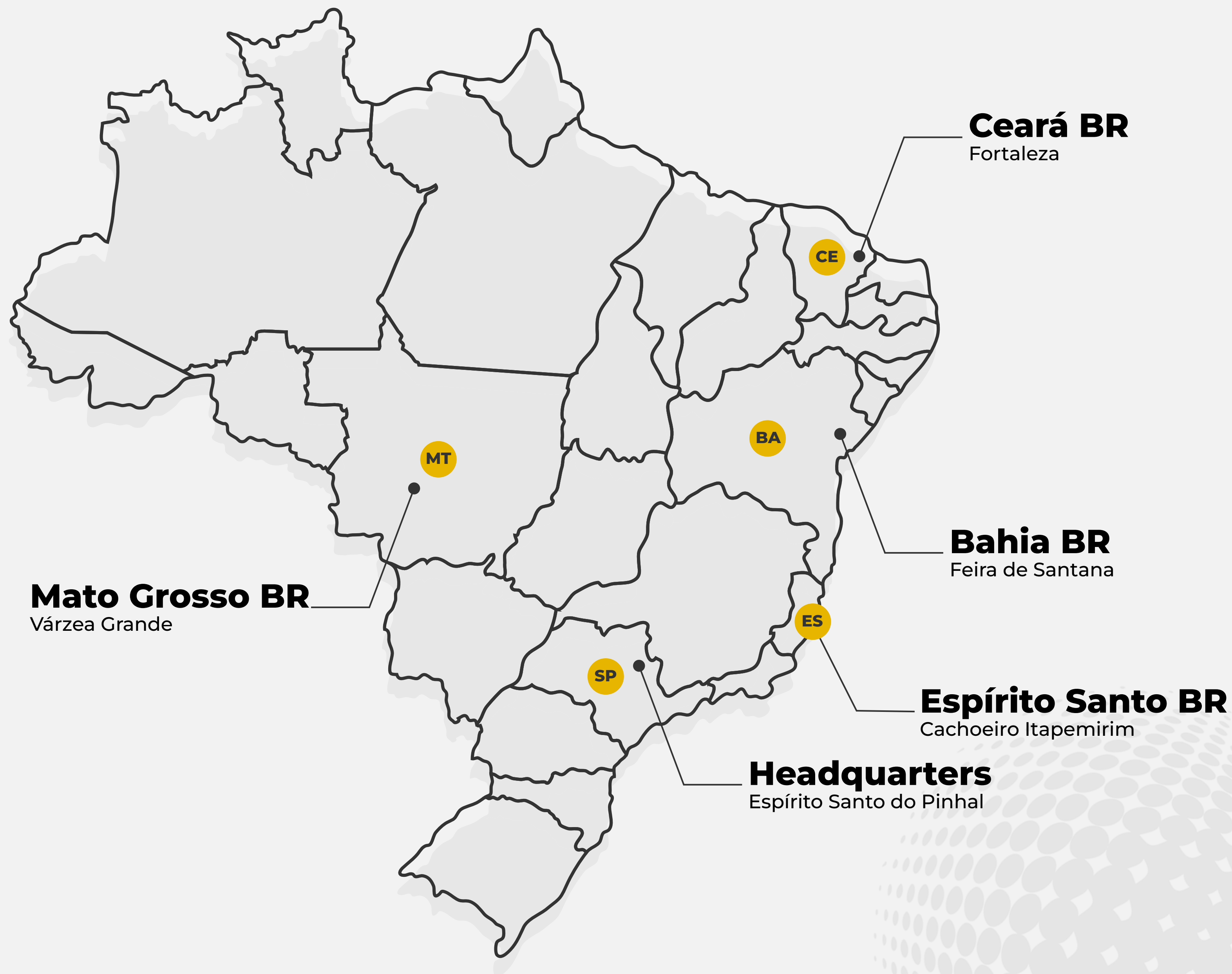
**GET TO
KNOW**

AGF
EQUIPAMENTOS®

About Us

AGF Equipamentos® is a Brazilian company headquartered in the countryside of São Paulo and with operations in the states of Espírito Santo, Bahia, Ceará, and Mato Grosso.

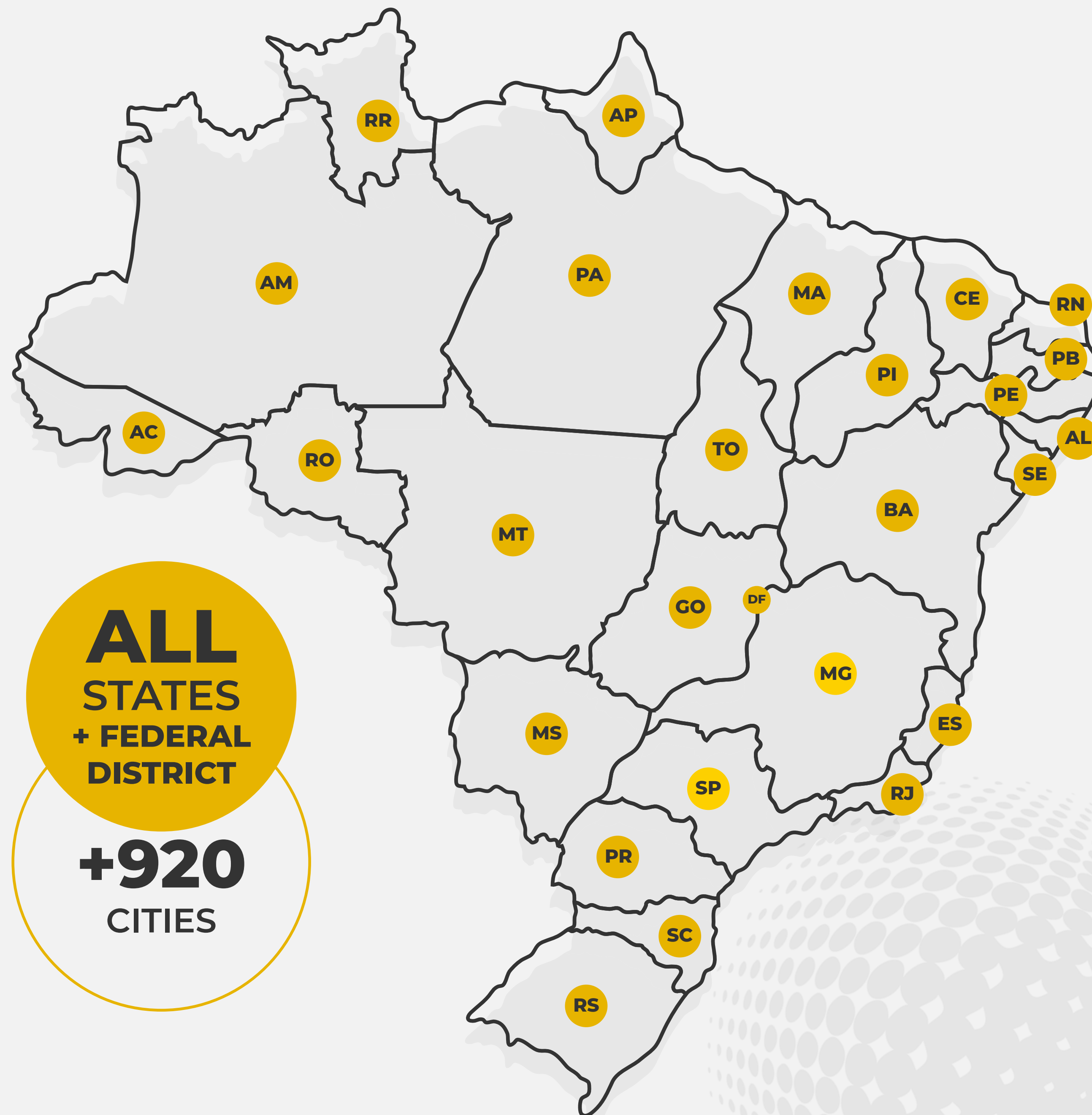
Our sales and post-sales network allow us to quickly serve customers worldwide.



Benchmark for the Construction, Mining, and Natural Stones Industries

Our company is specialized in solutions for the mining and construction industries, working with high-tech machines and extraction, drilling, moving, demolition, and recycling equipment.

AGF Equipamentos® products are designed to meet the technical requirements of a large range of applications with both quality and reliability.



Expanding Globally



Due to its nationwide reputation and product excellence, **ACF Equipamentos®** has been gaining worldwide space, attending many countries in diverse continents.

Technical Assistance

Our vehicles fleet is specially prepared to quickly and efficiently provide technical assistance **7 days a week**.

We offer the most complete preventive maintenance plan in the market. Equipment preventive procedures are tabulated and prescheduled, guaranteeing maintenance cost control and planning.



Use AGF Genuine Parts

By using **AGF Genuine Parts**, you ensure your equipment maintains its factory-quality state. You can find the needed parts, guaranteeing product quality, security, and reliability through our Spare Parts Assistance.

We deliver **more than 95%** of spare parts requests in 48 hours upon order placement, and in **more than 97%** of emergency situations in less than 24 hours to provide the needed spare part.





CONSTRUCTION



RECYCLING



DEMOLITION



ENERGY SUPPLYING



EXTRACTION



SAWMILL



FINISHING

Diamond Wire Saw Machine

AGF Diamond Wire Saw Machines are equipped with an automatic cutting and moving system, controlled by frequency inverters that assure a cost-effective solution with improved cutting ability, safety, and higher productivity.



100% Automatic Machine



Guaranteed Security



High cutting speed



Aquila Multiwire

AGF Aquila is the Multiwire Family for the industrial cut of marble, granite, and other material slabs, with diverse thicknesses of 15, 20, and 30 mm, with verified lifetime, due to its project with structural rigidity; construction using high-quality materials and simple technical solutions.



16-Second Emergency Shutdown



Easier wire replacements



Productivity



Polishing Machine

WIND PREMIUM AGF Polishing Machine is a high-performance equipment used for the polishing of marble, granite, and natural stone slabs in diverse thicknesses.

A complete line that delivers high-end quality, low maintenance and operating cost.

WIND PREMIUM's robust structure allows higher rigidity and reliability during the production process. All of its components go through a special treatment against oxidation, increasing their lifetime. Using precise movements plus mechanical assemblies is obtained a high-level productivity in the polishing and honing process.



Productivity



Security



Technology



Hydraulic Breakers

The **AGF/EDT Hydraulic Breakers** are produced with a strict quality control process, which makes it an extremely reliable tool for the most diverse applications, being highlighted:

- Block Breaking
- Dismantling of rocks in urban area constructions
- Boulder reduction in quarries
- Clean and precise demolitions and of varying degrees of hardness
- Road and bridges maintenance
- Primary and secondary breaking
- Trenching and others.



Easy Maintenance



Greater resistance and lifetime



New boulder pulling system



Hydraulic Pedestal Boom

The **AGF BH Series of Hydraulic Pedestal Boom** was designed to operate with a primary crusher, seeking more safety and productivity during the crushing process.

AGF BH Series of Hydraulic Pedestal Boom automates the boulder-breaking process at the jaw crusher, eliminating the risks of accidents caused by the manual process, and reducing the jaw crusher downtime.

During jaw crusher maintenance, the **Hydraulic Pedestal Boom** becomes the key equipment for jaw moving and the emaining heavy parts, making the assembly and dismantling process easier



Easy Maintenance



Increased Lifetime



Security Guaranteed



Concrete Pulverizer

AGF PC Series Pulverizer is the best option for primary and secondary demolition. Made of high-resistance steel, the robust structure provides low maintenance cost and increased durability against wear and tear.

Equipped with a continuous rotation set, that allows better flexibility and efficiency in concrete dismantling.



High-Performance



Increased Lifetime



Low Maintenance Cost



Hydraulic Scrap Shears

The ***Hydraulic Scrap Shears*** is the ideal tool for modern industrial demolition sites and professionals in the recycling of scrap and ferrous materials. It's a fast, reliable, efficient, and robust tool made of HARDOX, representing the state-of-art among hydraulic scrap shears.

Available for excavators from 3 to 100 tons.



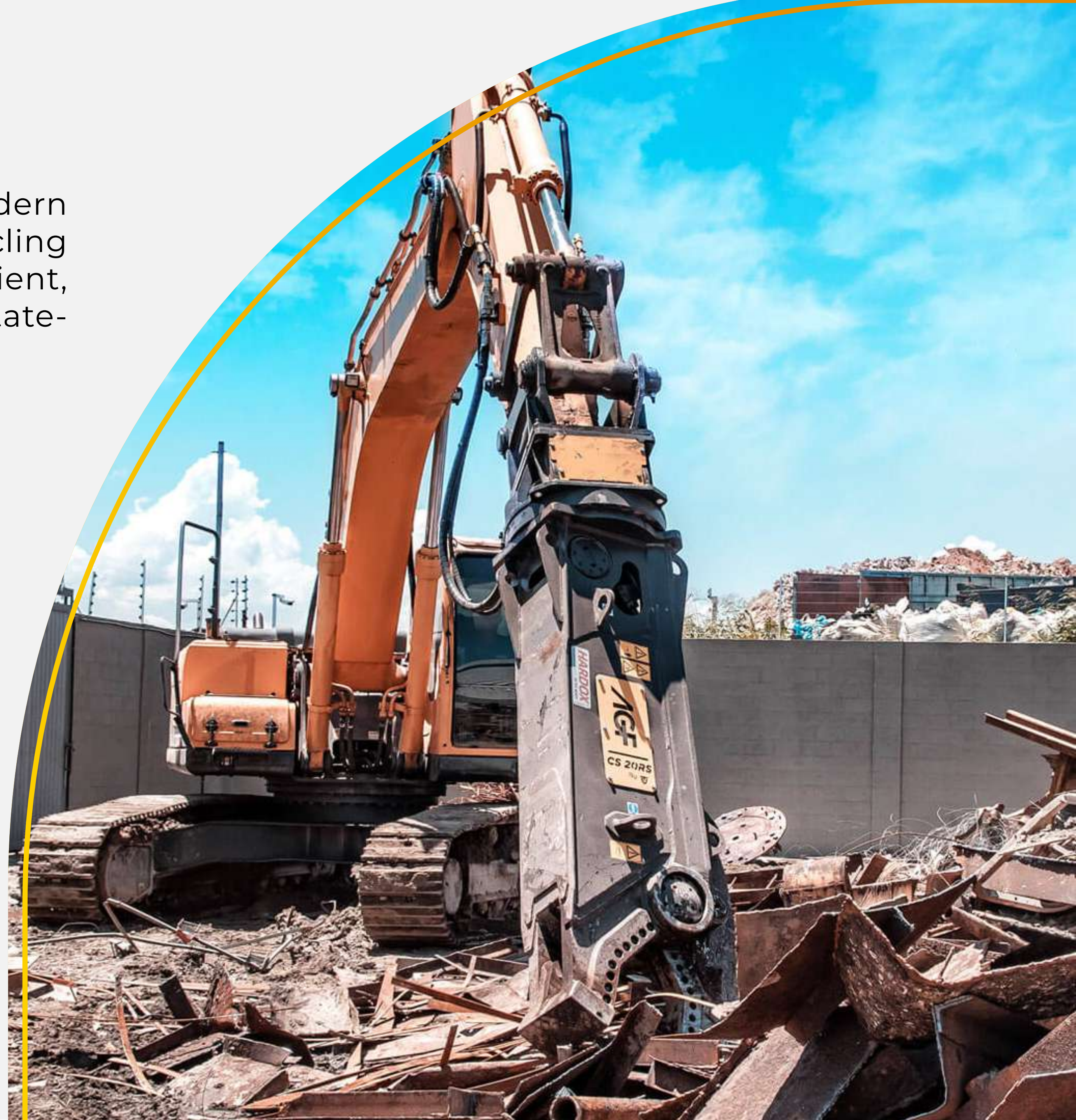
Reversible and adjustable blades



Efficiency and robustness



Longer lifetime



Generator Sets

The **AGF Generator Sets** are designed with high technology, offering the best performance in energy generation, consumption and maintenance.

In addition to its specially developed careening, consisting of panels, roof and doors to access the engine and electrical panel, becoming suitable for numerous applications, that match its high performance, economy and reliability



Easy assembly and operation



Long and reliable performance



High-quality components



Diesel Portable Air Compressor

AGF Diesel Portable Air Compressor is a highly reliable equipment, designed to work in harsh conditions with safety and efficiency. Its compact and robust structure enables higher workspace mobility.

CP420 is a high performance wheeled diesel portable screw air compressor, this assembly supplies ongoing pressure and flow, providing increased productivity.



Easy assembly and operation



Robustness and Transportation



High-quality components



Electric Screw Air Compressors

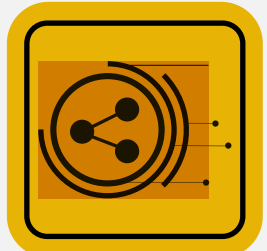
The **Electric Air Compressors** of direct drive motor screw provide low capital cost and low operating cost. Compressed air is often referred to as the 'fourth utility' and is critical to most manufacturing operations.

We have three series of Electric Air Compressors:

- **EDF Series:** Fixed Speed
- **EDV Series:** Variable Speed
- **Epm Series:** Permanent magnet and Variable Speed



Low Energy Consumption



Touch-screen Dashboard



Increased Lifetime





+55 19 3888-5800

www.agfequipamentos.com.br



Get to know our Facilities:

Headquarters:

Rod. SP 346, km 202,5
Distrito Industrial, Esp. Sto do Pinhal - SP
CEP: 13.990-000

Bahia Branch:

Rua Rio Madeira, nº 45
Santa Mônica, Feira de Santana - BA
CEP: 44.077-828

Espírito Santo Branch:

R. Irmã Giovanna Menechini, nº 141
Bairro Marbrasa, Cachoeiro Itapemirim - ES
CEP: 29.313-656

